

Aldolase (ALDOA) Antibody (N-term)
Purified Rabbit Polyclonal Antibody (Pab)
Catalog # AW5238**Specification**

Aldolase (ALDOA) Antibody (N-term) - Product Information

Application	WB, IHC-P,E
Primary Accession	P04075
Other Accession	P05065 , P00883 , P05064
Reactivity	Human, Mouse, Rat
Predicted	Rabbit
Host	Rabbit
Clonality	Polyclonal
Calculated MW	H=39,45;M=39;Rat=39 KDa
Isotype	Rabbit IgG
Antigen Source	HUMAN

Aldolase (ALDOA) Antibody (N-term) - Additional Information**Gene ID** 226**Antigen Region**
66-95**Other Names**

ALDOA; ALDA; Fructose-bisphosphate aldolase A; Lung cancer antigen NY-LU-1; Muscle-type aldolase

DilutionWB~~1:1000
IHC-P~~1:10~50**Target/Specificity**

This Aldolase (ALDOA) antibody is generated from rabbits immunized with a KLH conjugated synthetic peptide between 66-95 amino acids from the N-terminal region of human Aldolase (ALDOA).

Format

Purified polyclonal antibody supplied in PBS with 0.09% (W/V) sodium azide. This antibody is prepared by Saturated Ammonium Sulfate (SAS) precipitation followed by dialysis against PBS.

Storage

Maintain refrigerated at 2-8°C for up to 2 weeks. For long term storage store at -20°C in small aliquots to prevent freeze-thaw cycles.

Precautions

Aldolase (ALDOA) Antibody (N-term) is for research use only and not for use in diagnostic or therapeutic procedures.

Aldolase (ALDOA) Antibody (N-term) - Protein Information

Name ALDOA ([HGNC:414](#))

Synonyms ALDA

Function

Catalyzes the reversible conversion of beta-D-fructose 1,6- biphosphate (FBP) into two triose phosphate and plays a key role in glycolysis and gluconeogenesis (PubMed:14766013). In addition, may also function as scaffolding protein (By similarity).

Cellular Location

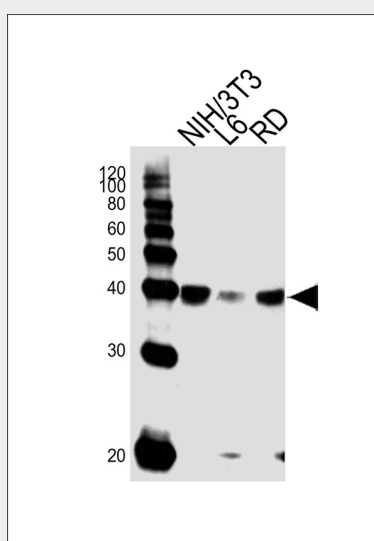
Cytoplasm, myofibril, sarcomere, I band {ECO:0000250|UniProtKB:P00883}. Cytoplasm, myofibril, sarcomere, M line {ECO:0000250|UniProtKB:P00883}. Note=In skeletal muscle, accumulates around the M line and within the I band, colocalizing with FBP2 on both sides of the Z line in the absence of Ca(2+) {ECO:0000250|UniProtKB:P00883}

Aldolase (ALDOA) Antibody (N-term) - Protocols

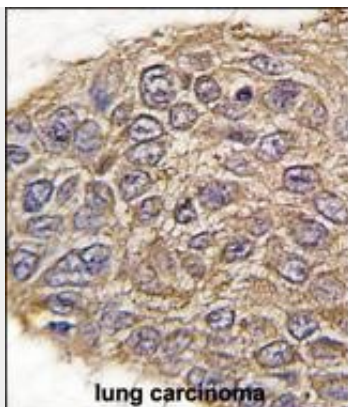
Provided below are standard protocols that you may find useful for product applications.

- [Western Blot](#)
- [Blocking Peptides](#)
- [Dot Blot](#)
- [Immunohistochemistry](#)
- [Immunofluorescence](#)
- [Immunoprecipitation](#)
- [Flow Cytometry](#)
- [Cell Culture](#)

Aldolase (ALDOA) Antibody (N-term) - Images



Western blot analysis of lysates from mouse NIH/3T3, rat L6, RD cell line (from left to right), using ALDOA Antibody (N-term)(Cat. #AW5238). AW5238 was diluted at 1:1000 at each lane. A goat anti-rabbit IgG H&L(HRP) at 1:10000 dilution was used as the secondary antibody.



Formalin-fixed and paraffin-embedded human lung carcinoma tissue reacted with ALDOA antibody (N-term) (Cat.#AW5238), which was peroxidase-conjugated to the secondary antibody, followed by DAB staining. This data demonstrates the use of this antibody for immunohistochemistry; clinical relevance has not been evaluated.

Aldolase (ALDOA) Antibody (N-term) - Background

Aldolase A (fructose-bisphosphate aldolase) is a glycolytic enzyme that catalyzes the reversible conversion of fructose-1,6-bisphosphate to glyceraldehyde 3-phosphate and dihydroxyacetone phosphate. Three aldolase isozymes (A, B, and C), encoded by three different genes, are differentially expressed during development. Aldolase A is found in the developing embryo and is produced in even greater amounts in adult muscle. Aldolase A expression is repressed in adult liver, kidney and intestine and similar to aldolase C levels in brain and other nervous tissue. Aldolase A deficiency has been associated with myopathy and hemolytic anemia.

Aldolase (ALDOA) Antibody (N-term) - References

- Gizak,A., Proteins 72 (1), 209-216 (2008)
Lu,J., Biochem. Biophys. Res. Commun. 369 (3), 948-952 (2008)
Valis,K., Mol. Cell. Biochem. 311 (1-2), 225-231 (2008)